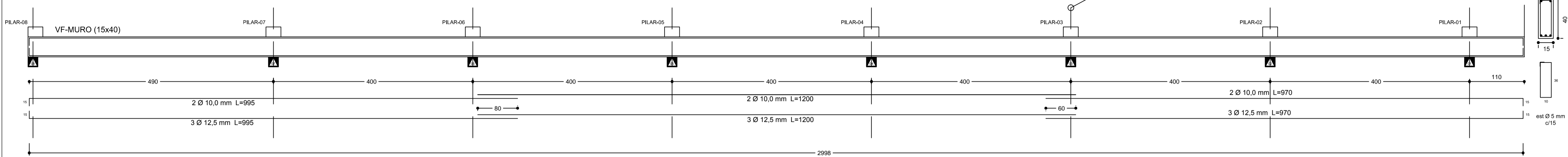
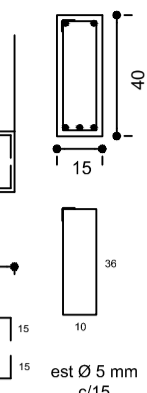


VIGA DO MURO

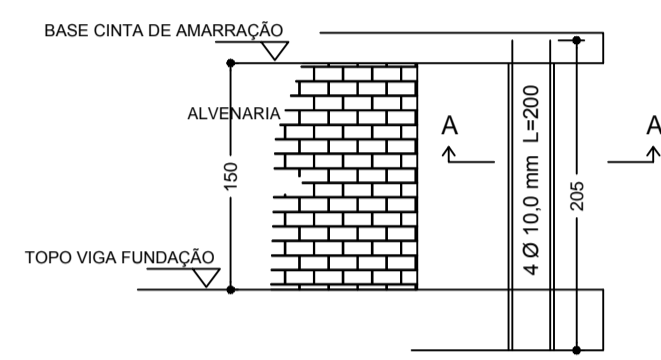


PERFIL DO DEGRAU ESC. 1:25

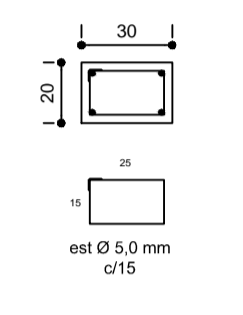


PILARES

ESQUEMA DOS PILARES 01 A0 08

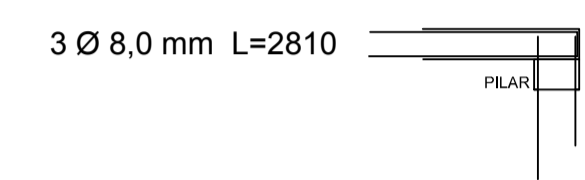


SEÇÃO A-A DOS PILARES ESC. 1:25

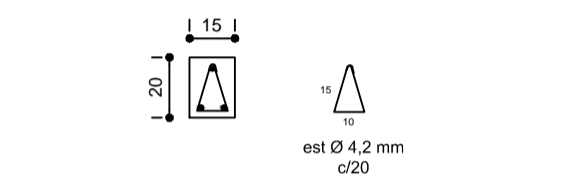


VIGA DE AMARRAÇÃO

ESQUEMA DA VIGA DE AMARRAÇÃO

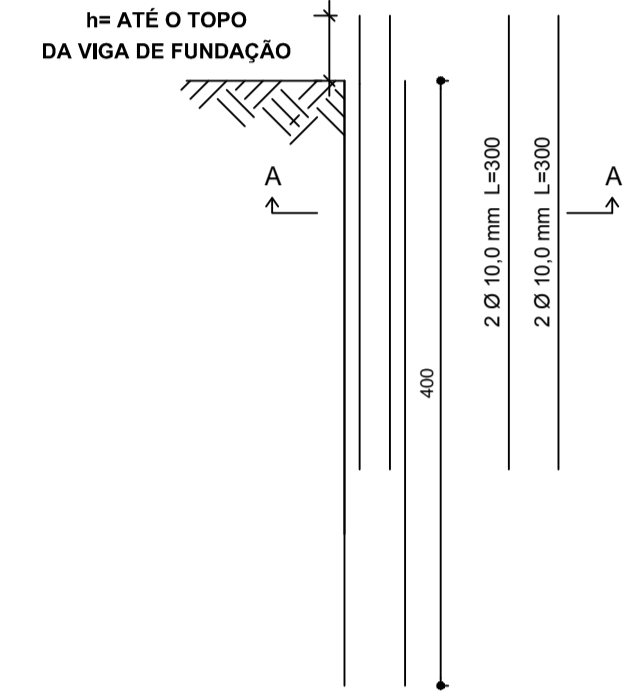


PERFIL DA VIGA DE AMARRAÇÃO ESC. 1:25

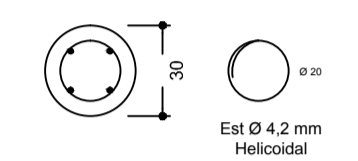


ESTACAS

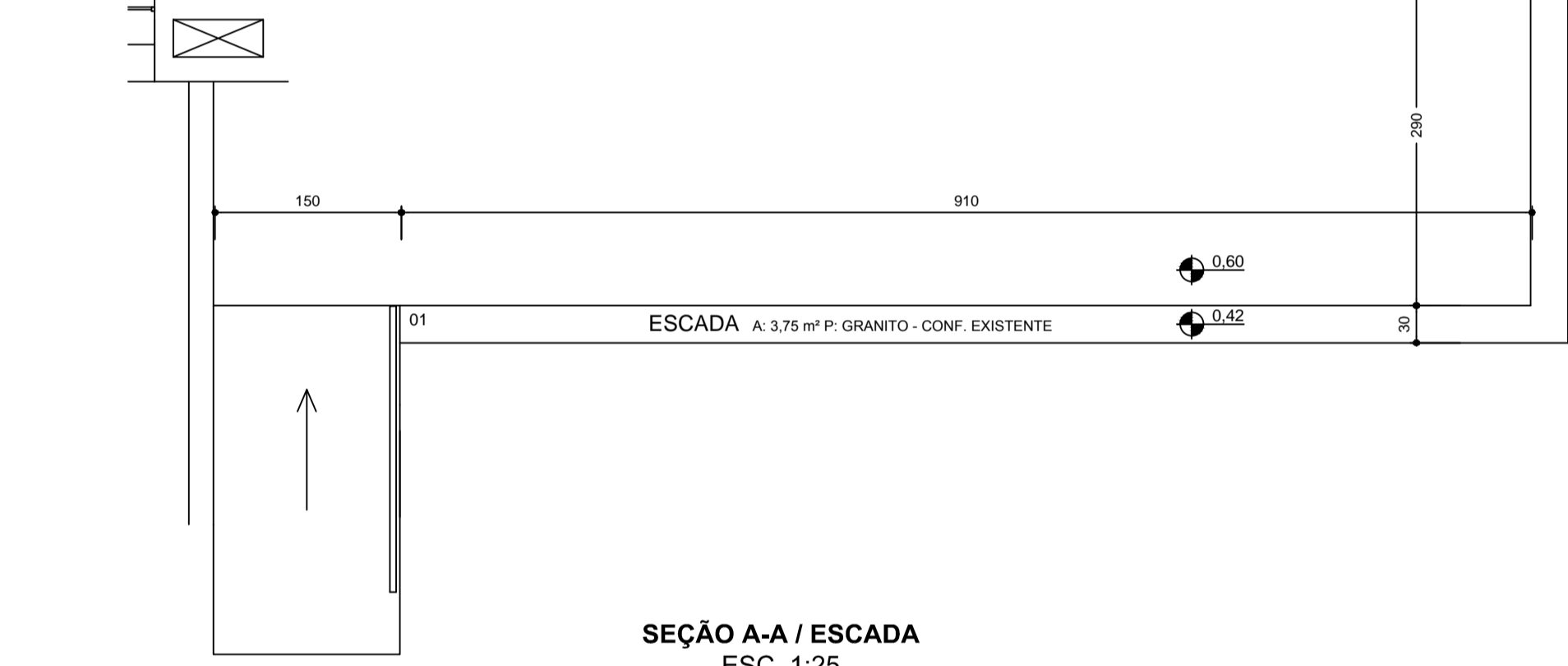
PERFIL DA MICRO ESTACA ESC. 1:50



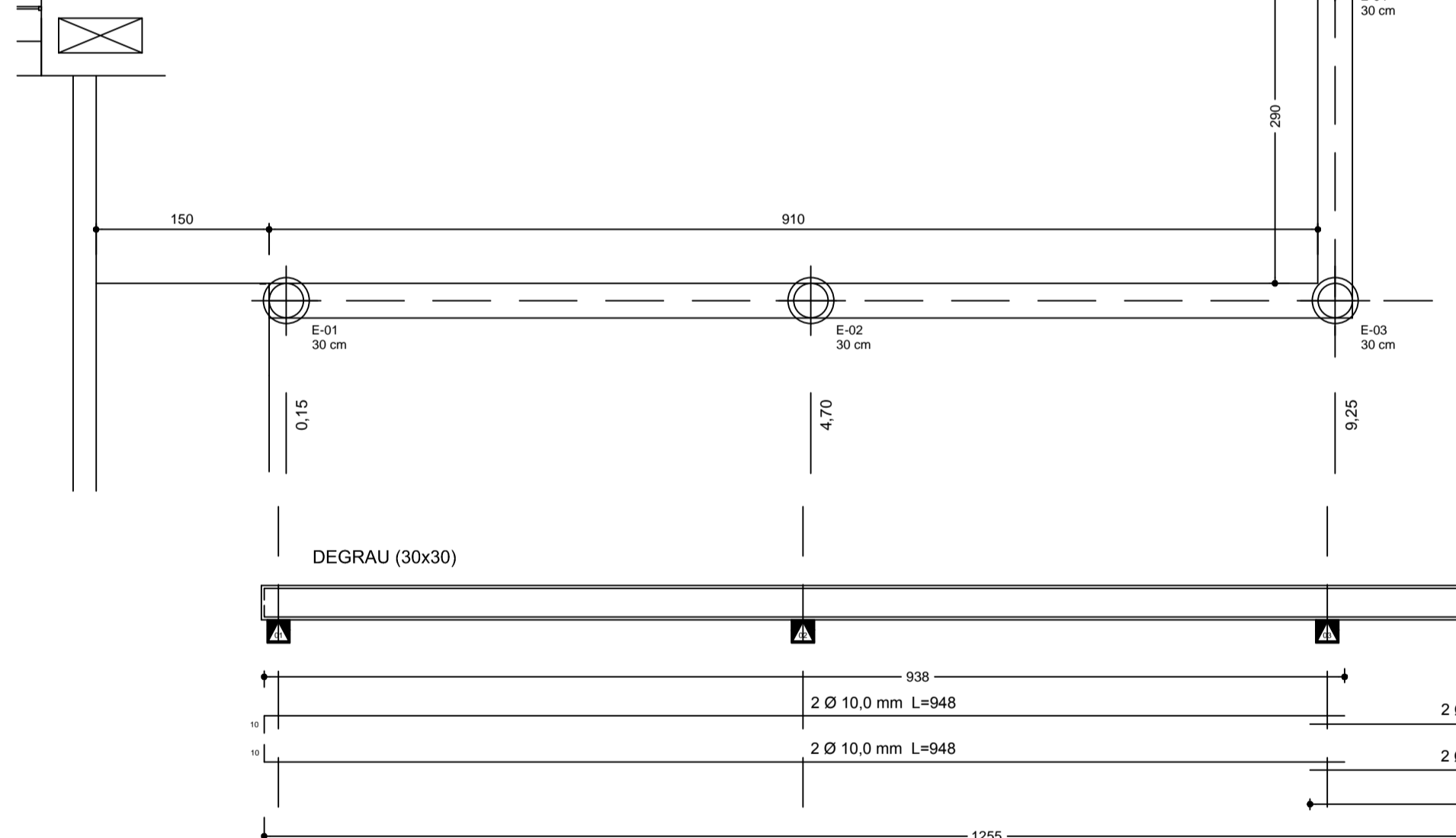
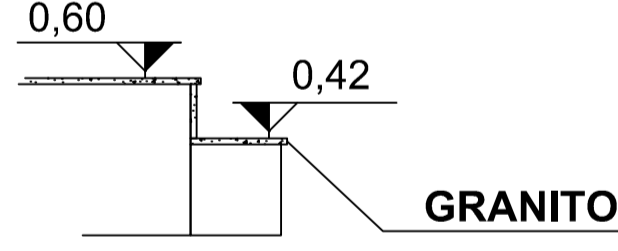
SEÇÃO A-A / ESTACA ESC. 1:25



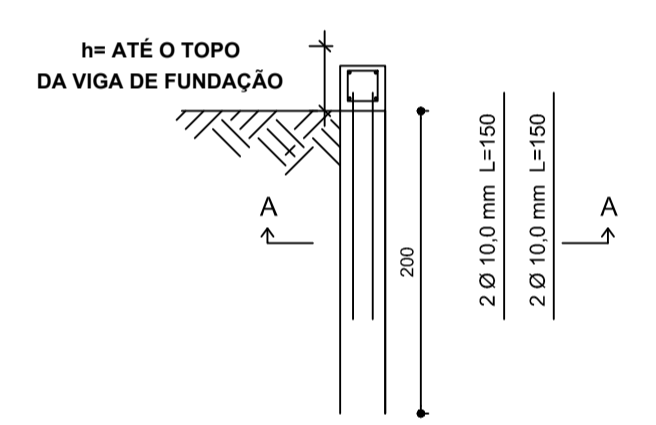
ESCADA



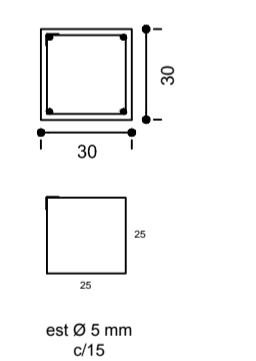
SEÇÃO A-A / ESCADA ESC. 1:25



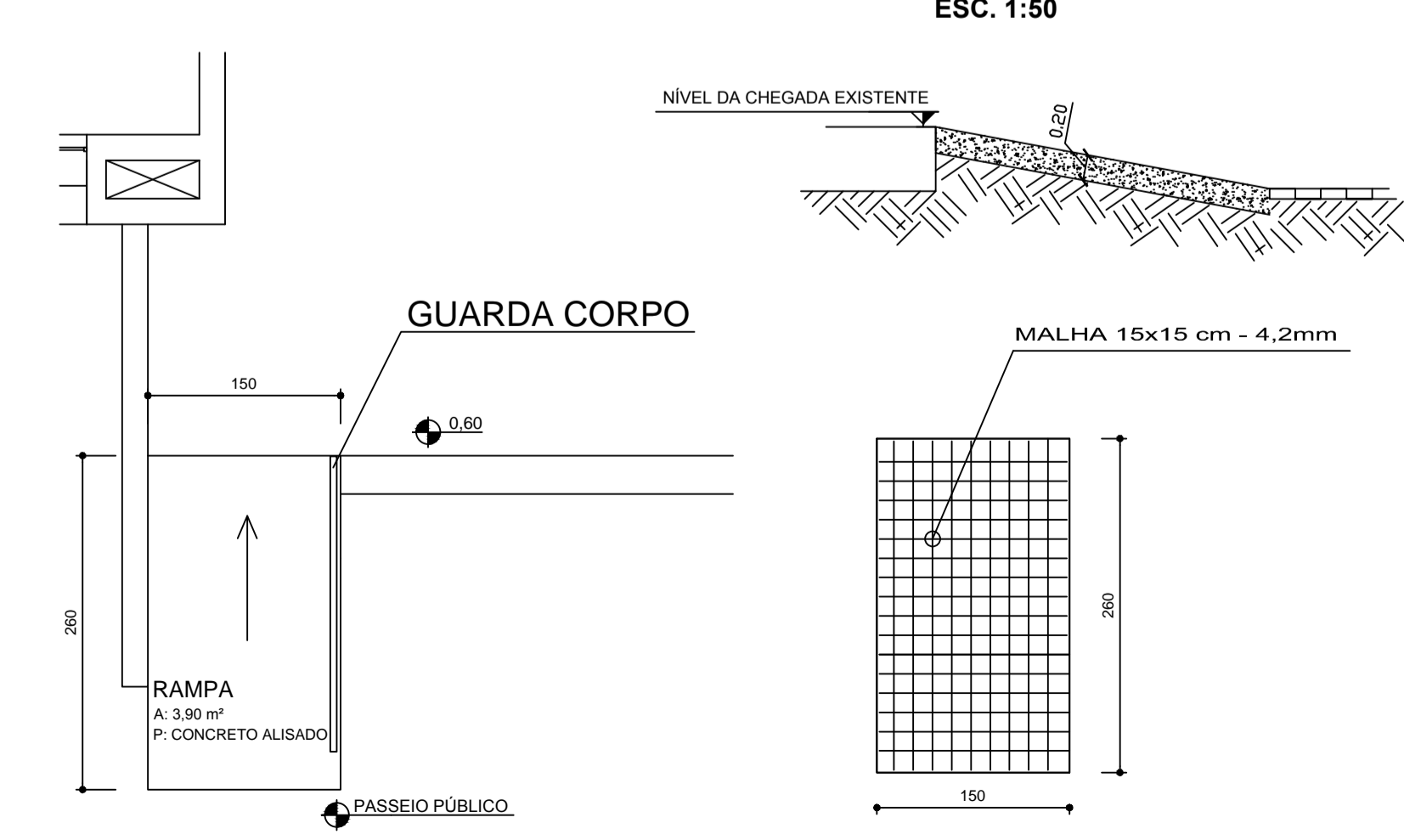
PERFIL DA MICRO ESTACA 30,0 cm ESC. 1:50



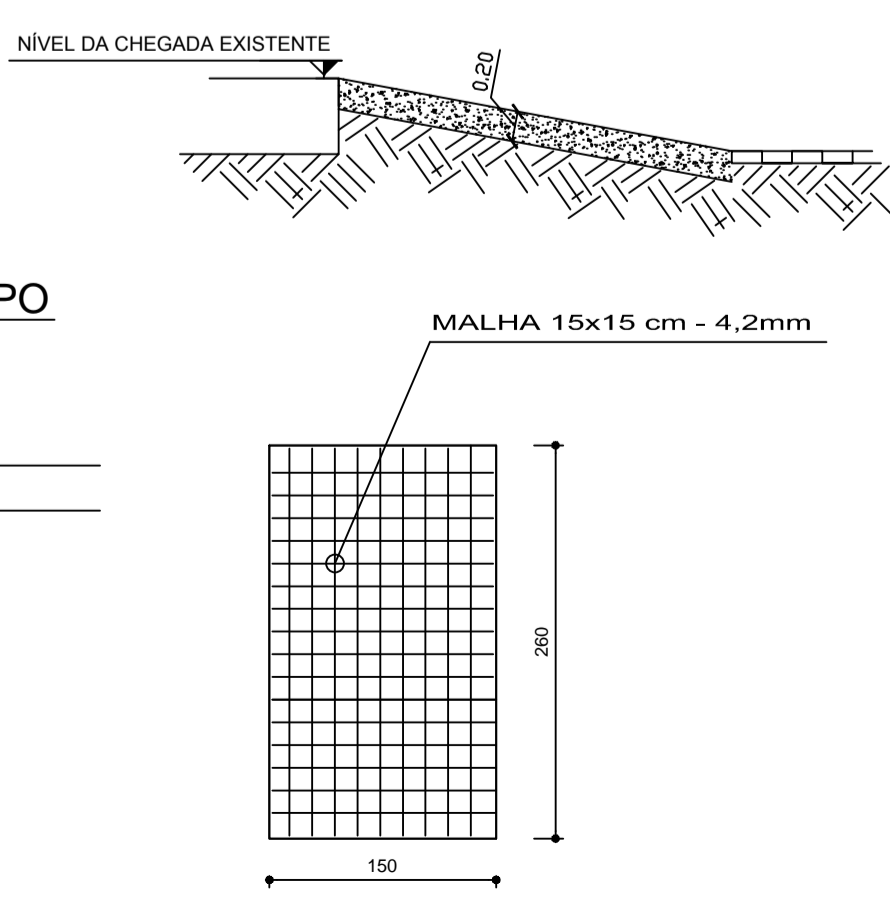
PERFIL ARMAÇÃO DO DEGRAU ESC. 1:25



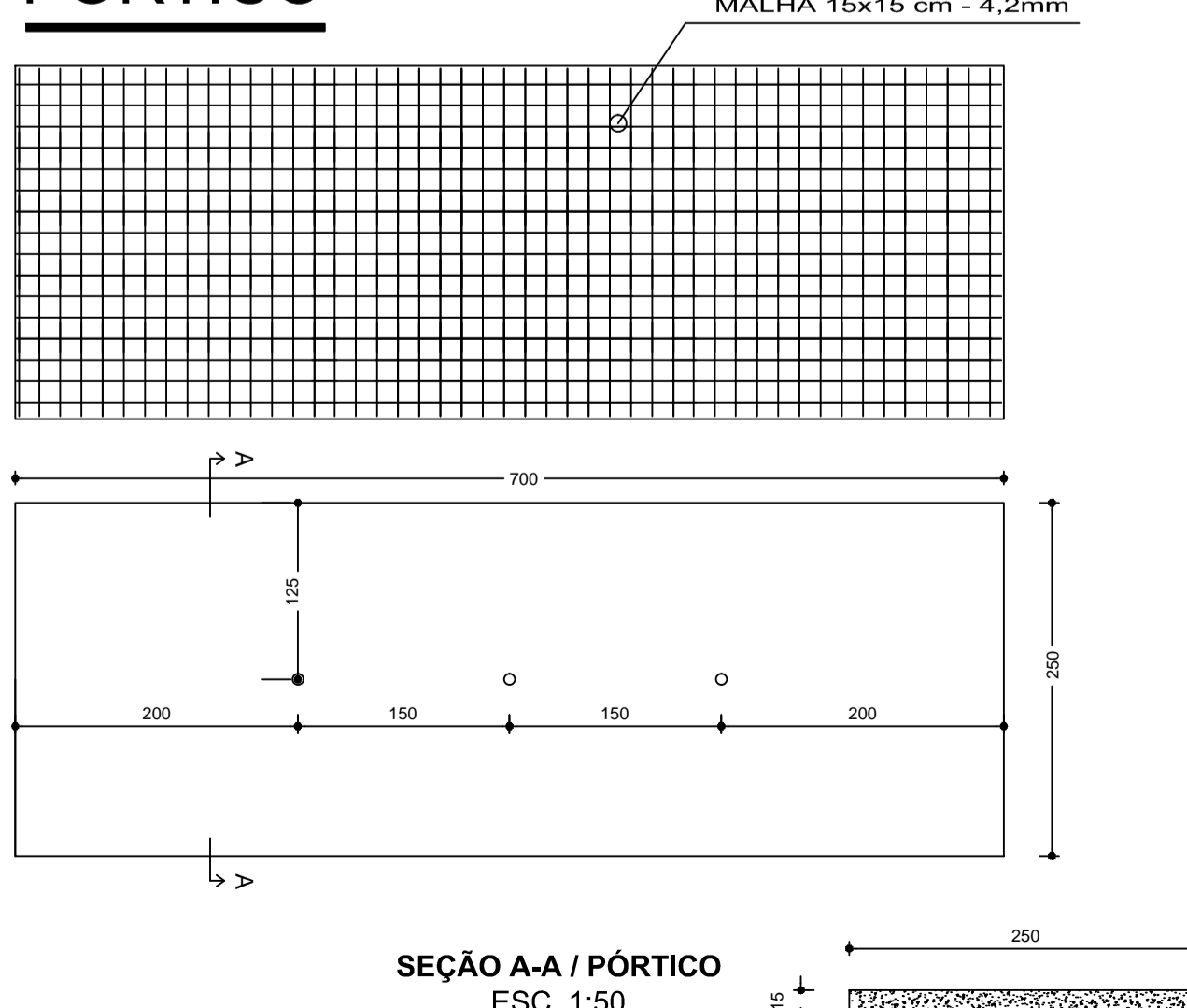
RAMPA



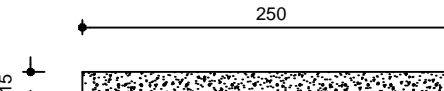
PERFIL DA RAMPA ESC. 1:50



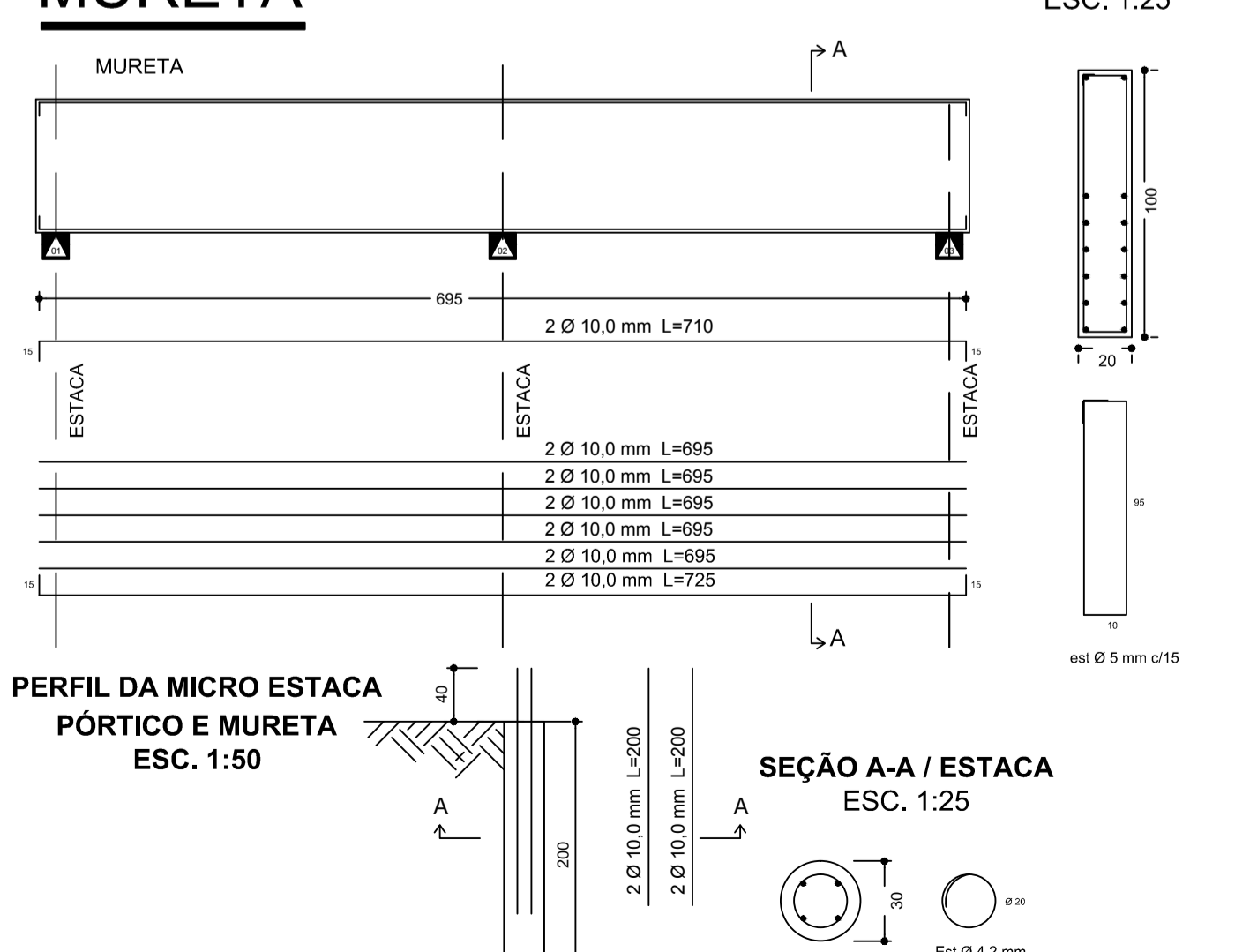
PÓRTICO



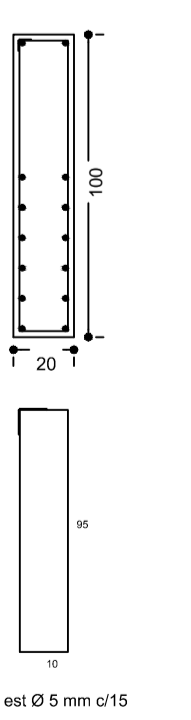
SEÇÃO A-A / PÓRTICO ESC. 1:50



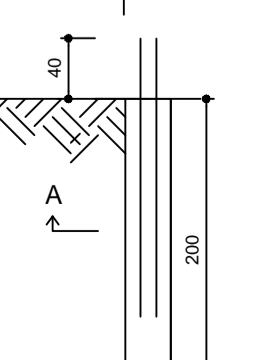
MURETA



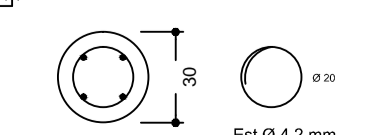
SEÇÃO A-A / VIGA ESC. 1:25



PERFIL DA MICRO ESTACA PÓRTICO E MURETA ESC. 1:50



SEÇÃO A-A / ESTACA ESC. 1:25



RESUMO DE AÇO PARA TODAS AS ESTRUTURAS						
CLASSE	APLICAÇÃO	DIÂMETRO (mm)	PESO (kg/m)	COMPRIMENTO TOTAL (m)	EQUIVALÊNCIA EM BARRAS (12,0 m)	PESO + 0% (kg)
CA-50	BARRAS	12,5	0,963	140,8	12,0	135,6
		10,0	0,617	294,0	24,5	181,4
CA-60	ESTRIBOS	8,0	0,395	60,0	5,0	23,7
		5,0	0,154	441,0	36,7	67,9
		4,2	0,109	435,6	36,0	47,5

RESUMO DO CONCRETO PARA PILARES		
CLASSE (MPa):	VOLUME (m³):	
20	9,7	

CÂMARA DE VEREADORES DE PASSO DO SOBRADO

Tipo de Obra: EDIFICAÇÃO PÚBLICA - CÂMARA DE VEREADORES DE PASSO DO SOBRADO		Emissão Inicial
Local da Obra: RUA MANOEL ALFEU DE BORBA		Data: 16/04/2007
Proprietário: CÂMARA DE VEREADORES DE PASSO DO SOBRADO		Revisão:
Responsável Técnico: Engº Civil Marcos R. Pacheco - CREA / RS 143731		Data:
Projeto: PROJETO ESTRUTURAL - MURO - RAMPA - ESCADA - PÓRTICO - MURETA		
Desenho: Ronaldo Marcós		Prancha: EST 01
Data: ABR-2007/2020	Escala: 1:50	Projeto: PUB-001-PS